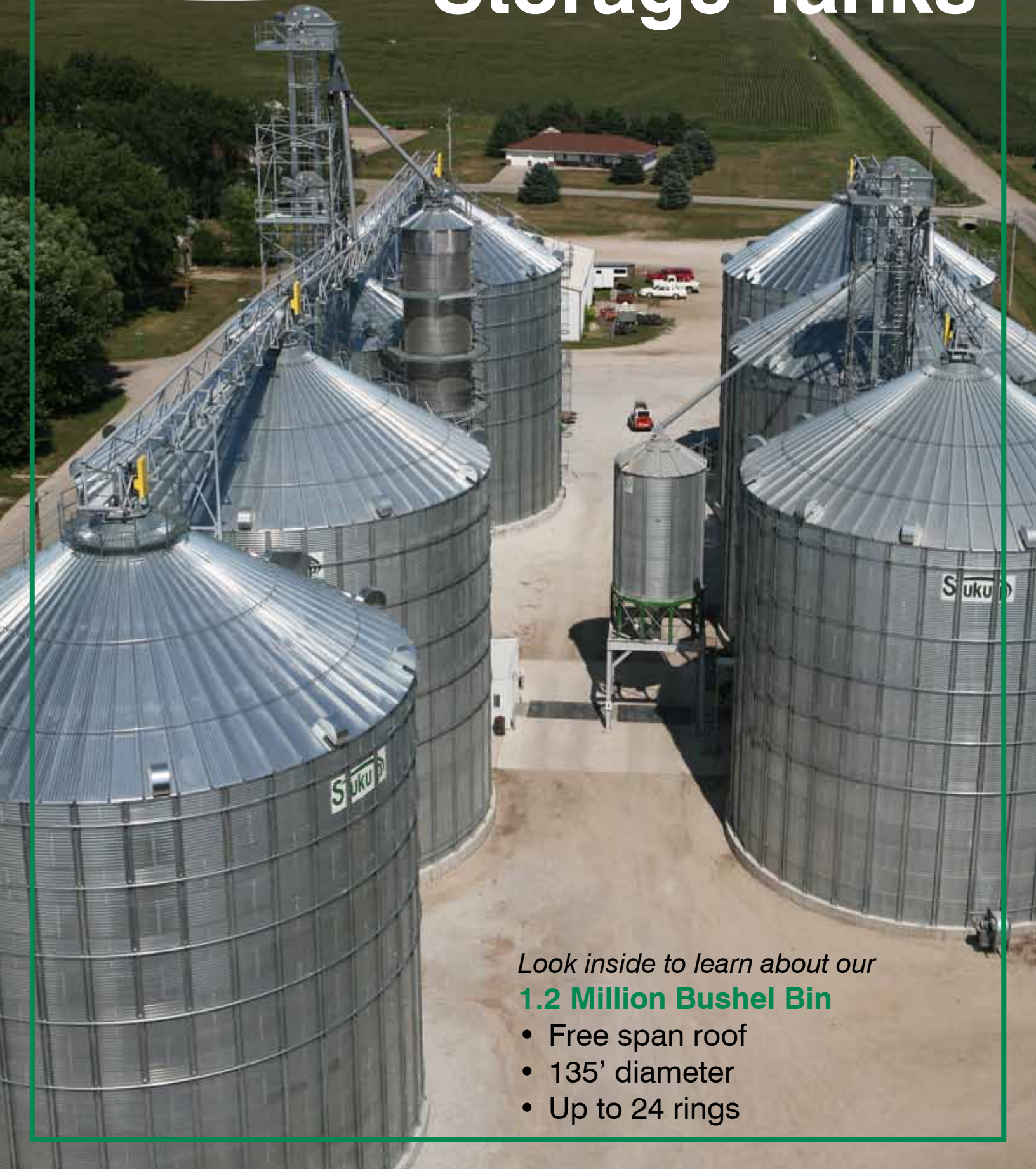




Commercial Storage Tanks



Look inside to learn about our

1.2 Million Bushel Bin

- Free span roof
- 135' diameter
- Up to 24 rings

1.2 Million Bushel Bin



More grain means more bushels, and that means bigger bins. We've answered the call for more storage with our 135' Commercial Bin. It is the first ever fully-erected free-span bin to hold over one million bushels. With a 1,200,000 bushel capacity, you can maximize your storage space, while minimizing the number of bins.



In addition to standard full-length stiffeners, the Sukup 135' Commercial Bin also features intermediate anchor brackets that serve as stiffeners for the bottom ring of the bin. This also enables it to be unloaded in a single pass.



High Strength Steel -- Sukup Sidewall Sheets

Sukup uses a minimum 70,000 psi and up to 75,000 psi tensile strength steel to provide better vertical load carrying capacity. The 4" wide corrugations on Sukup sidewall sheets create less resistance and friction to allow grain to flow more easily. Sukup sheets are 44" high, so there are fewer rings, seams and bolts than bins with 32" sidewall sheets.



Top Quality Bolts

All bolts on a Sukup Commercial Bin are SAE Grade 8.2 (the highest standard in the industry) with JS 500 plating. The SAE Grade 8.2 ensures that Sukup bolts will hold up to the stresses placed on them.

Bolt Grade	Proof Load (psi)	Yield Strength (psi)	Tensile Strength (psi)
8.2 Sukup	120,000	130,000	150,000
5	85,000	92,000	120,000
2	55,000	57,000	74,000

Sukup has used JS 500 plating on their bolts from the start to ensure the long life of their tanks. Many others use Zinc Dichromate.

Corrosion Protection	Hours to Red Rust
JS 500 Sukup	500
Polyseal	240
Zinc Dichromate	108
Zinc	72

Optimum Bolt Usage

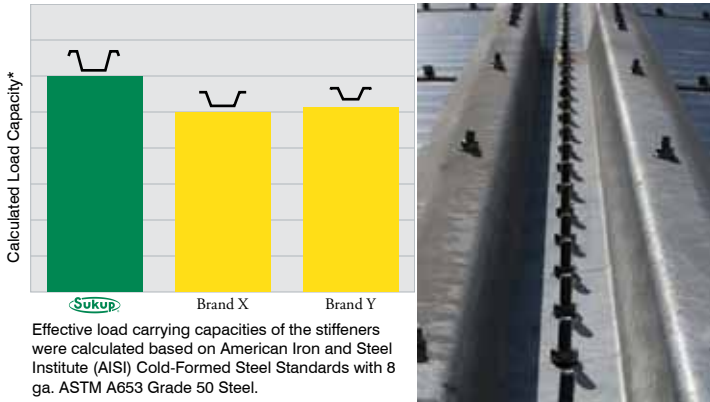
The vertical bolt pattern on Sukup Commercial Bins has been evaluated for optimum performance and convenient erection. Sukup engineers use solid imaging computer design analysis to determine the proper bolt size to ensure the integrity of the seams while minimizing the number of bolts needed in order to speed erection and keep costs in line.



ial Storage - Better By Design

Sukup vs. the Competition -- Commercial Stiffeners

Not all stiffeners are designed alike, and not all stiffeners perform alike. Sukup commercial stiffeners are made from 70,000 PSI minimum tensile strength galvanized steel and were computer-engineered specifically to make them extra strong.



Sukup stiffeners are externally-mounted only. External stiffeners provide excellent support and prevent the accumulation of grain and the resulting spoilage that can occur with internal stiffeners. Wind rings are used to provide greater rigidity to Sukup Commercial Bins when they are empty.



Easy Access

A 44", single-ring door is available on shorter Sukup Commercial Bins.

The 44" door features Hammer Head latches and the inner panels lay flat against the sidewall when open.

Sukup's taller Commercial Bins are equipped with a 26.5" round door; the largest round door in the industry.



A walk-through door is also available as another convenient option to help enter and exit the bin with ease.



Side Draw Systems

Sukup side draw systems are an option on commercial storage tanks.

As with any side draw, the grain must be emptied to a uniform height on the sidewall before refilling. Use only Sukup designed side draw units with Sukup Commercial Bins. Never add a side draw system to an existing bin.



Single Pass Sweep Unloading

60" diameter and smaller Sukup Commercial Bins are designed to be unloaded in a single pass. Anchors can be added to allow it in larger diameters.



Intermediate base anchors allow single pass unloading in large Sukup Bins.

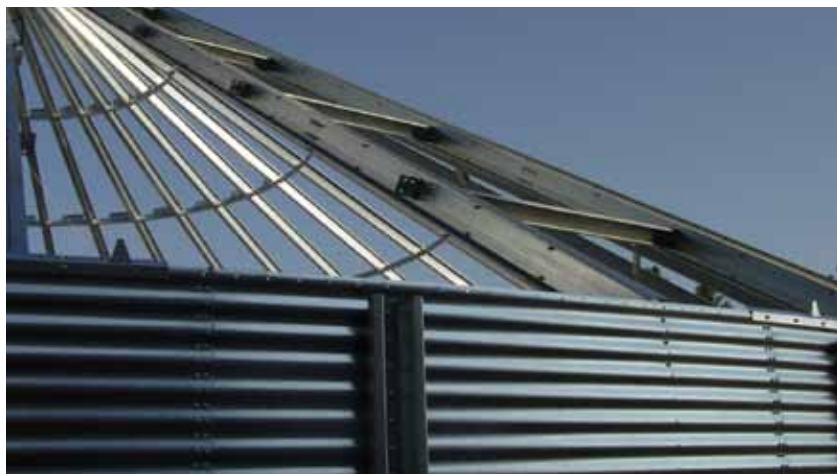
Eugene Sukup started Sukup Manufacturing in 1963 and, with the help of his two sons, Charles and Steve, has grown this family-owned business into a leader in the grain storage and handling industry.



Sukup invested in the newest, most advanced bin production line in the world. Using the most accurate roll-forming machinery available results in great fitting, quality bins, that are efficiently and economically produced. That is why they offer a 5-year limited warranty.



Sukup Built to be



Exceptional Peak Load Rating

Sukup offers commercial roofs with 15,000, 30,000 or 50,000 lb. peak load ratings. Roof ratings are pounds evenly distributed on peak ring as pure vertical load with uniformly distributed roof snow load calculated from 40 psf ground snow zone or 90 mph wind zone as defined by ASCE7-05 Code.



30,000 lb. Roof

The strength of the 30,000 lb. Sukup roof comes from double C-shaped channels forming I-beam rafters with C-shaped purlins. Rafters and purlins are manufactured from 70,000 psi tensile strength galvanized steel.

Commercial Tank Sizes

Dia.	Peak Heights Available	Max. Cap. Available (Bu)	Standard Roof Peak Load	Optional Roof Peak Load
42'	45'11"-100'11"	42,969-107,213	5,000	15,000 or 30,000
48'	47'8"-102'8"	56,929-140,840	5,000	15,000 or 30,000
54'	49'8"-104'8"	73,072-179,272	15,000	30,000
60'	51'6"-106'6"	91,423-222,585	15,000	30,000
72'	54'8"-109'8"	135,353-324,153	30,000	15,000
75'	55'7"-110'7"	147,582-352,713	30,000	15,000
78'	56'6"-111'6"	160,982-382,560	30,000	15,000
90'	60'3"-115'3"	219,999-514,999	30,000	15,000 or 50,000
105'	64'8"-123'4"	309,096-710,624	30,000	50,000
135'	70'11"-125'11"	542,868-1,206,618	50,000	-

Eave Heights available: 9-24 rings, 33'1"-88'1"

Foundation specifications must be designed by a qualified engineer based on local soil conditions. Soil boring test must be done by a competent engineering firm and foundation construction must be done by a knowledgeable concrete contractor.

the Best from Base to Peak Lid

Strength -- Inside and Out

The substructure of Sukup Commercial Roofs provides strength on the inside, but Sukup roofs also have strength on the outside. Sukup's specially-designed roof panels are formed on a fully-automated, highly-advanced, single-pass roll forming system. This system maintains tight tolerances, ensuring an accurate fit for easier assembly and a tight seal between panels.



Rigidized Roof Panels

Sukup's roll-forming process (shown above) includes a step to rigidize the full length of the roof panels every 4" to increase the stiffness of the panels, making them easier to handle. Sukup introduced their bins with the deepest roof ribs (3") incorporating multiple bends, giving added strength to the roof panels. Sukup even went the extra step of making the ribs two different widths for a better overlap and fit. The inner or lower rib is slightly smaller than the upper, allowing the sheets to nest properly.



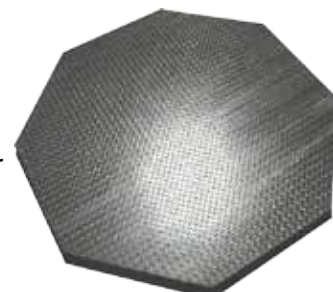
Roof Rings Standard

Roof rings are standard on all Sukup commercial roofs. The number of rings varies depending upon bin diameter.



Sukup Commercial Peak Lids

15,000; 30,000 and 50,000 lb. Sukup commercial roofs come equipped with a 1/4" thick, 60" diameter, diamond deck steel peak lid that provides a solid base for conveying equipment or fill spouts. The diamond decking provides a non-slip surface for improved worker safety. The lid can be cut on-site to match your conveyor or down spout requirements.



Proper Ventilation -- Sukup Roof Vents

Proper ventilation is an important part of maintaining grain quality. Sukup offers 18" fixed screen and 24" power roof exhausters.

Exclusive 18" poly vents with hinged screen (patent pending) are extremely durable and feature a debris deflector to prevent damage to roof sheets from accumulating fines and trash.



Sukup roof sheets are available pre-punched for 18" vents. Pre-punching the vent holes produces an extra-tall (1 1/8") extruded lip that works as a barrier, preventing moisture from leaking into the tank through the vent opening.



Ladders, Cages, and Platforms

Sukup has available ladders, cages, landing platforms and stairs. Sukup ladders feature continuous handrails and rungs that are securely fastened, so they can't turn. Cages are also available for outside ladders for increased safety.



Material Handling



Sukup Tower Dryers

- 12', 18', 24' Diameters
- 46' - 120' Heights
- Dry up to 7000 bu/hr.
- Positive unloading system removes grain from the dryer at a rate based on the grain temperature as it enters the cooling portion.



Drag Conveyors

We're making it easier and more cost-effective to handle grain. Sukup conveyors are constructed with heavy-gauge, galvanized steel. 1/2" UHMW flights on all conveyors prevent steel-to-steel contact. Removeable shaft, sprocket and bearings make it easy to maintain your Sukup conveyor. Optional abrasion-resistant steel and liners guarantee your investment will last for years to come.



Commercial Fans

Sukup Fans are #1 in the industry! Sukup is tops in performance and reliability. Centrifugal fans available up to 60 hp. Axial fans available up to 44".



Bucket Elevators

Sukup Bucket Elevators give you the capacity for expansion. Our bucket elevators have UHMW seals on all shafts, durable SOFR rubber belting, heavy-gauge trunking and heavy-duty angle iron framework at the head and boot sections to add strength. The low-impact elevator head shape minimizes the cracking and damaging of grain. Additionally, Sukup offers what our competitors will not: a bucket elevator built to your specifications.

Sukup Hopper Tanks

- 15' - 36' diameter tanks available up to 12-rings.
- Capacities from 2200 bu. to 44,500 bu.
- 45° hopper.
- Exclusive inner apron on heavy-duty hoppers prevents grain from accumulating at the tank/hopper seam and allows grain to flow freely into the hopper.



Sukup Manufacturing Company ■ www.sukup.com

Box 677 ■ 1555 255th St. ■ Sheffield, IA 50475-0677
ph 641.892.4222 ■ fx 641.892.4629 ■ email info@sukup.com

Distribution Centers

Arcola, IL 61910
980 E. State Rte. 133
ph 217.268.3026
fx 217.268.3522

Aurora, NE 68818
1705 Hwy. 34 E.
ph 402.694.5922
fx 402.694.5921

Cameron, MO 64429
7426 NE 352nd St.
ph 816.649.2226
fx 816.649.2225

Defiance, OH 43512
7724 Rte. 66 N.
ph 419.784.9871
fx 419.784.9872

Jonesboro, AR 72403
5917 E. Johnson Ave.
ph 870.932.7547
fx 870.933.8946

Watertown, SD 57201
2701 Piper Ave.
ph 605.882.6697
fx 605.884.0467