

INTāK™ AD-LIB LACTATION FEEDING SYSTEM

AUTOMATED PRODUCTION SYSTEMS



Optimize improved sow performance

Optimize sow herd performance by maximizing feed intake with the AP INTāK Ad-Lib lactation feeding system.



24/7 PRECISION FEEDING ▲

The INTāK dispenser provides reliable feed flow 24 hours a day delivering a regulated amount of fresh feed with each actuation. The easy set indexed adjustment system can be used to adapt the dispenser to a wide range of feed types and sows.



SAVE TIME AND FEED ▲

The INTāK dispenser's patented* design decreases feed waste and labor costs associated with hand feeding and stale feed removal.

*Patent Number
6,101,975



ADAPTABILITY ▲

INTāK dispensers are easily adapted to most farrowing crates and can be retrofitted to existing stainless steel feeders. Dispensers can be hand filled using the optional fifteen-pound hopper or filled automatically with a Chain Disk fill system.



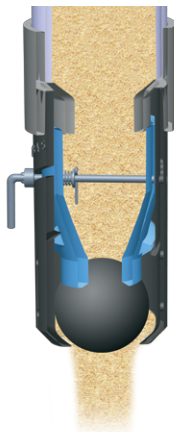
INTāK™ AD-LIB LACTATION FEEDING SYSTEM

AUTOMATED PRODUCTION SYSTEMS



OPTIMIZE PERFORMANCE

- Fresh feed available to sows 24/7
- Decrease feed waste and the time spent removing stale feed
- Indexed adjustment system adapts to a variety of feed types
- Designed for quick and simple cleaning
- Adaptable to most existing farrowing crate feeders



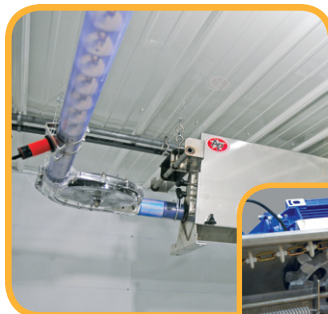
COMBINE WITH ULTRA-DROP

The Ultra-Drop feeder permits accurate control for limit feeding and doubles as a feed reservoir when sows are fed ad-lib. The translucent feeder and fill tube provides visual confirmation that sows are eating.



COMBINE WITH CHAIN DISK

Twisting and turning through multiple farrowing rooms while delivering feed to AP's INTāK feed dispensers present no challenge to the AP Chain Disk Feed Delivery System.



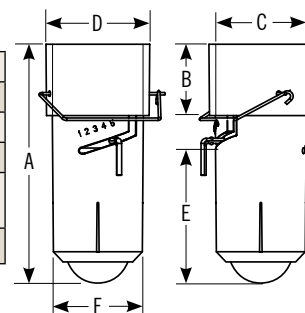
INTāK PERFORMANCE

	INTāK System w/Water in Feeder	Hand Feeding Twice Daily
Number of Sows & Litters	57	57
Average Parity	2.8	2.7
Litter Size (post cross fostering)	10.03	10.16
Avg. Daily Feed Disappearance	13.24 lbs.	12.15 lbs.
Lactation Wt. Change Post Farrowing	+14.33 lbs.	+2.65 lbs.
Avg. Pig Weight (Day 20)	14.46 lbs.	13.56 lbs.

Test Results from Michigan State University Dept. of Animal Science (Peng 2005)

DISPENSER DIMENSIONS

A	Overall Height	11-3/4" (29.8 cm)
B	Top Collar Height	3.5" (8.9 cm)
C	Top Collar ID	3-7/16" (8.7 cm)
D	Top Collar OD	5-3/32" (12.9 cm)
E	Adjuster at low setting to bottom	1-1/32" (2.6 cm)
F	Body OD	4-3/8" (11.1 cm)



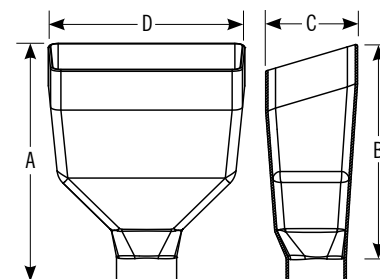
CAPACITY CAPABLE

The INTāK dispenser can be equipped with a heavy duty plastic feed hopper to provide up to fifteen pounds of feed capacity.



HOPPER DIMENSIONS

A	Overall Height	17-7/8" (45.2 cm)
B	Installed Height	16" (40.6 cm)
C	Side View Width	6-7/8" (17.5 cm)
D	Front View Width	14-11/16" (37.3 cm)



"INTāK feeders have greatly improved our sow condition, saved labor and added over a pound to our weaning weight."

Tony Pitcher
Pitchco Farms
Montrose, IL



AUTOMATED PRODUCTION SYSTEMS

1004 E. Illinois St. Assumption, IL 62510 USA

217-226-4449 Fax 217-226-3540

Int'l Tel 217-226-4401

Tech Support 712-239-1011

member of
GSI GROUP



5/11 AP-20

For more information on AP's many products and services, contact your local AP representative or visit us online at:

www.automatedproduction.com