

The success of the modern facility depends on many issues of which longevity, efficiency and performance of the ventilation fans are a substantial part.

**high efficiency**  
performance driven



**BUILT FOR DURABILITY ▲**

From resilient & aerodynamic fiberglass housings with stainless steel mounting hardware to heavy duty fan guards with a baked on finish, AP quality is unsurpassed.



**BUILT FOR EFFICIENCY ▲**

We're designing and building fans year after year that are constantly surpassing previous energy consumption barriers with even greater airflow performance.



**BUILT FOR PERFORMANCE ▲**

Compare the enclosed performance numbers and realize the AP difference. We think you'll agree, AP fans surpass the competition in quality, efficiency, and performance.





# VENTILATION FANS

## AUTOMATED PRODUCTION SYSTEMS

### PERFORMER SERIES VENTILATION FANS

When the design team at AP was given the challenge of developing the Performer series fan line, three points were paramount. Performance, efficiency, and longevity all needed to be maintained while keeping the price as competitive as possible. You will find the Performer Series ventilation fans have not only met, but exceeded those goals.

proficient  
cost effective

### PERFORMER SERIES FANS TECHNICAL DATA

Size	Drive	Speed	HP	Phase	Voltage	Freq.	SF	Full Load Amps	Motor RPM
APP-12F	Direct	Variable	1/4	1	115/230	50/60	1	3.0/1.5	1725
APP-14F	Direct	Variable	1/4	1	115/230	50/60	1	3.0/1.5	1725
APP-14FC	Direct	Variable	1/4	1	115/230	50/60	1	3.0/1.5	1725
APP-18	Direct	Variable	1/3	1	115/230	50/60	1	3.8/1.9	1725
APP-18FC	Direct	Variable	1/3	1	115/230	50/60	1	3.8/1.9	1725
APP-24	Direct	Variable	1/3	1	115/230	50/60	1	3.8/2.3	1100
APP-24FC	Direct	Variable	1/3	1	115/230	50/60	1	3.8/2.3	1100
APP-36F	Direct	Variable	1/2	1	115/230	50/60	1	6.2/3.1	850
APP-36FC	Direct	Variable	1/2	1	115/230	50/60	1	6.2/3.1	850
APPB-50C	Belt	Single	1 1/3	1	115/230	60	1	12.4/6.2	1725



#### PERFORMER DIRECT DRIVE ▲

Unlike fans that use a smaller 48 frame motor, Performer direct drive fans include the larger 56 frame motor providing higher performance while allowing for much cooler motor temperatures on variable speed applications. Performer direct drive fan motors include a full 3 year warranty.



#### PERFORMER BELT DRIVE ▲

Includes heavy duty 56 frame TEAO motors, 1" drive train (allowing for larger pillow block bearings and enhanced longevity), automatic belt tensioner, and large diameter pulleys with greasable pillow block bearings promote greater belt wrap and extended life.



#### PERFORMER EFFICIENCY ▲

Performance series fans outlast the competition with a lifetime warranted, carefully balanced, composite fiberglass blend blade. Props are designed to complement motor efficiency and produce the highest possible air output at the lowest cost.





## COMPETITOR SERIES FANS TECHNICAL DATA

Size	Drive	Speed	HP	Phase	Voltage	Freq.	SF	Full Load Amps	Motor RPM
CS24C1	Direct	Variable	1/3	1	115/230	60	1	3.9/2.0	1100
CS241-NC	Direct	Variable	1/3	1	115/230	60	1	3.9/2.0	1100
CS24PF90	Direct	Variable	1/3	1	115/230	60	1	3.9/2.0	1100
CS54C1-P	Belt	Single	1 1/2	1	115/230	60	1.5	16.0/8.0	1725
CS54C3-P	Belt	Single	1 3/4	3	208-230/460	50/60	1	4.9-5.0/3.0	1725
CS54C1-E	Belt	Single	1 1/2	1	115/230	60	1.5	16.0/8.0	1725
CS541-NC	Belt	Single	1 1/2	1	115/230	60	1.5	16.0/8.0	1725
CS543-NC	Belt	Single	1 3/4	3	208-230/460	50/60	1	4.9-5.0/3.0	1725

## COMPETITOR SERIES VENTILATION FANS

To be a player in today's international marketplace the modern pork producer needs a competitive edge. AP's Competitor series fans are the airflow champions. Available in up to 54" models, harnessed with high efficiency motors, and capable of moving up to 30,000 cubic feet of air per minute, Competitor series fans are another powerful tool to help you compete in today's world marketplace.

**competitive edge**  
**proven leader**



Shown with optional fiberglass discharge cone.



Shown with optional fiberglass discharge cone.



Pit Fan Model CS24PF

### COMPETITOR DIRECT DRIVE ▲

Direct drive Competitor series fans feature high efficiency 1/3 HP motors and durable, fiber reinforced nylon propellers. A five bladed propeller configuration provides for optimal air output while producing minimal operational load on the motor.



### COMPETITOR BELT DRIVE ▲

Includes a high performance stainless steel prop, 1.75 HP motor, 1" drive train (allows for larger pillow block bearings enhancing longevity), automatic belt tensioner, and large diameter pulleys with greasable pillow block bearings promote greater belt wrap and extended life.



### COMPETITOR PIT FANS ▲

Easy cleaning and low maintenance, Competitor series variable speed pit fans are ideal for minimum ventilation needs and removing hazardous pit gases. Choose from the Competitor 24" wall fan combined with a durable plastic pit transition or an economical one piece pit unit with external shutter.





## PERFORMER AND COMPETITOR FANS INCLUDE:



A white PVC shutter with stainless steel rod hinges is standard equipment. (Optional aluminum shutter available for 12"-36" fans with optional motor operator where required.)



All aluminum motor mounts constructed of heavy gauge materials.



Heavy duty fan guards with baked on finish.



Durable & aerodynamic fiberglass housing with stainless steel mounting hardware (limited lifetime warranty).

## QUALITY FAN ACCESSORIES

Look to AP for the finest in fans and fan accessory equipment. We offer a large selection of cost saving options to enhance your ventilation systems.



All weather fan hoods for 14" to 24" fans save on costs and improve fan efficiency particularly in windy or cold weather conditions.



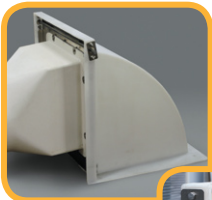
Wind deflector cones can be easily adapted to new or existing fans to improve the efficiency and performance of the total ventilation system.



Transit tubs are available to fit 8" to 24" fans. Transit tubs are ideal for applications where pump outs are not required.



Designed for the coldest weather, these insulated panels seal out even the most extreme winter conditions.



Quick-Lock kits simplify cleaning and maintenance. Stainless steel pit transitions are also available for 14" to 24" fans where pump outs are not required and sidewall curtains are necessary.

For Competitor and Performer 12" - 24" fans, the Competitor series pit transition is available where pump outs are required.



Made of durable fiberglass, AP's optional discharge cones boosts fan output by as much as 15%.

The 14"-36" fiberglass cones are provided as a one piece unit and 50" & 54" in an easy to ship and assemble 3 or 4 piece units.

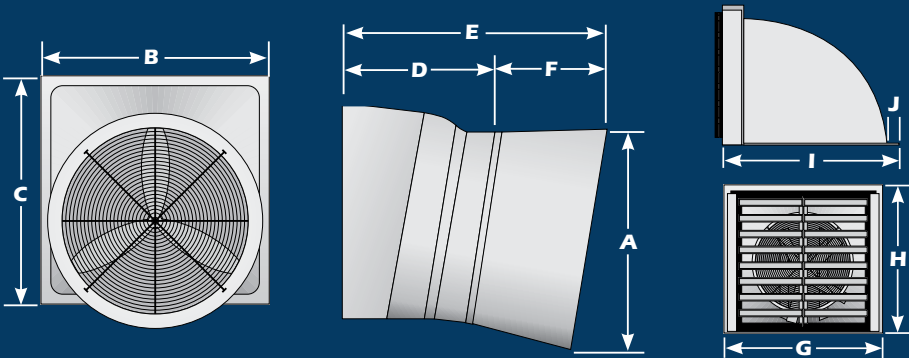


**Your Source for Innovative Solutions.**

## VENTILATION FAN DIMENSIONS

Fan	Rough Opening	(A) Cone Dia.	(B) Width	(C) Height	(D) Length Less Cone	(E) Length W/Cone	(F) Cone Length
APP-12F	17.0 x 17.0	N/A	16.65"	20.00"	25.50	N/A	N/A
APP-14F	20.0 x 20.0	20.500	22.50"	22.25"	21.87	42.625	20.750
APP-18F	25.5 W x 26.0 T	25.250	28.375"	28.125"	22.75	44.500	21.750
APP-24F	34.5 X 34.5	30.250	37.625"	37.625"	21.37	42.630	21.250
APP-36F	44.5 X 44.5	44.375	46.75"	46.75"	27.75	54.500	26.750
APPB-50	56 x 56	56.000	58.445"	58.445"	34.50	58.500	24.000
CS24	34.5 X 34.5	30.000	37.625"	37.625"	19.50	41.000	21.500
CS54	58.0 W X 60.5 T	64.750	64.442"	62.066"	27.00	57.500	30.500

Fan	Rough Opening	(G) Width	(H) Height	(I) Base Depth	(J) Flange Ext.
CS24PF	24.0 x 32.0	37.25"	35.313"	39.625"	2.25"



## PERFORMER & COMPETITOR FAN PERFORMANCE

Size	0.00" SP		0.05" SP		0.10" SP		0.15" SP		0.20" SP		AFR
	CFM	CFM/Watt	CFM	CFM/Watt	CFM	CFM/Watt	CFM	CFM/Watt	CFM	CFM/Watt	
APP-12F	1560	5.7	1447	5.2	1334	4.8	1035	4.0	363	1.4	0.25
APP-14F	2487	7.8	2385	7.3	2270	7.0	2150	6.5	2003	6.1	0.84
APP-14FC	2830	9.6	2710	9.0	2610	8.5	2500	8.0	2370	7.4	0.87
APP-18	4387	9.6	4181	9.0	3964	8.5	3792	8.0	3568	7.5	0.85
APP-18FC	5090	11.8	4890	11.0	4720	10.6	4470	9.7	4250	9.0	0.87
APP-24	6442	14.7	5928	13.3	5463	12.1	4990	11.0	4495	9.8	0.76
APP-24FC	7470	18.0	7010	16.7	6550	15.0	6090	13.6	5550	12.3	0.79
APP-36	11113	16.6	10297	15.0	9392	13.0	8328	11.5	7131	9.7	0.69
APP-36FC	12290	22.2	11310	19.6	10360	17.1	9220	14.8	7710	11.9	0.68
APPB-50C	24033	24.4	23228	22.7	21615	20.5	19188	17.7	17419	15.6	0.75
CS24C1	6520	18.9	6160	16.9	5800	15.4	5350	13.7	4880	12.4	0.79
CS241-NC	5770	15.3	5440	14.3	5090	13.1	4680	11.9	4230	10.9	0.77
CS54C1-P	N/A	N/A	30000	20.2	28200	18.3	26300	16.5	23900	14.7	0.80
CS54C3-P	N/A	N/A	30500	19.8	28500	17.8	26700	16.0	24300	14.2	0.80
CS54C1-E	N/A	N/A	24161	27.3	21746	23.5	18917	19.8	14966	15.4	0.62
CS541-NC	27200	18.9	25700	17.4	24100	15.9	22400	14.6	20400	13.1	0.79
CS543-NC	27000	18.4	25500	17.0	23900	15.6	22200	14.3	20100	12.8	0.79
CS24PF90	4065	11.1	3607	9.8	3132	8.4	2531	6.8	1951	5.3	0.54

All fan performance numbers based on 60 Hz operation.



# VENTILATION FANS

## AUTOMATED PRODUCTION SYSTEMS

### SPECIALTY FANS

Whether winter or summer, your livestock need to have maximum comfort levels to achieve optimum results. AP's selection of specialty fans can improve upon otherwise marginal environments. Be it high powered cooling, gentle circulation, or something in between, look to AP for a cost saving solution.

#### BASKET FANS

Basket fans are available in 24" and 36" single speed and variable speed models. Basket fans feature heavy duty fan guards with baked on finish, high efficiency motors and propellers, and versatile mounting options that adapt to most applications.



#### MINI-BRUTE & DUCT FANS

Ideal for low air requirements of small farrowing or nursery rooms, AP's Mini-Brute and duct fans are a very cost effective solution. These fans deliver more precise amounts of air under windy conditions than larger fans. The duct will adapt to existing 10" PVC pump out ports. 10" PVC pipe extensions and elbows for duct fans are available.



#### FIBERGLASS PANEL FANS

AP's fiberglass panel fans feature durable & aerodynamic fiberglass housings with stainless steel mounting hardware that carries a limited lifetime warranty. Heavy duty fan guards with a baked on finish are available for front, rear or both sides of the fan. Motor mounts are constructed of all aluminum heavy gauge materials for a lighter weight unit and extended life. Carefully balanced, composite fiberglass blend propellers feature a lifetime warranty.

### SPECIALTY FAN TECHNICAL DATA

Model#	Prop. Dia.	Motor H.P.	Nominal RPM	CFM 0" SP	CFM .05" SP	CFM .1" SP	CFM/WATT	Rough Opening Width (in.)	Rough Opening Height (in.)
<b>Basket Fans</b>									
BSK24	24"	1/3	1100	6029	N/A	N/A	15.2 @ .00SP	N/A	N/A
BSK36A	36"	1/2	850	10900	N/A	N/A	19.3 @ .00SP	N/A	N/A
<b>Fiberglass Panel Fans</b>									
GPP1433RFG	14	1/3	1725	2097	1923	1552	6.7 @ .05SP	18 5/8"	18 5/8"
GPP1833RFG	18	1/3	1726	3435	3201	2973	9.4 @ .05SP	22 1/4"	22 1/4"
GPP2433RFG	24	1/3	1140	5324	5028	4725	9.4 @ .05SP	28 1/2"	28 3/4"
<b>Mini-Brute™ and Duct Fans*</b>									
MB-10	10	1/6	3400	917	886	846	5.5 @ .05SP	11 1/4"	11 1/4"
DF-10	10	1/6	3400	1015	989	962	6.1 @ .05SP	N/A	N/A

\*Tested by Bess Laboratories, University of Illinois. Performance shown with guards and shutters in place (except with DF-10 where shutters do not apply).



### AUTOMATED PRODUCTION SYSTEMS

1004 E. Illinois St. Assumption, IL 62510 USA

217-226-4449 Fax 217-226-3540

Int'l Tel 217-226-4401

Tech Support 712-239-1011

member of  
GSI GROUP



5/11 AP-55

For more information on AP's many products and services, contact your local AP representative or visit us online at:

**[www.automatedproduction.com](http://www.automatedproduction.com)**